



# PRODUCT BULLETIN

## HYDRAULIC FUSES

### MODEL 20008 SERIES

### VELOCITY FUSE

### (SOFT STOP)

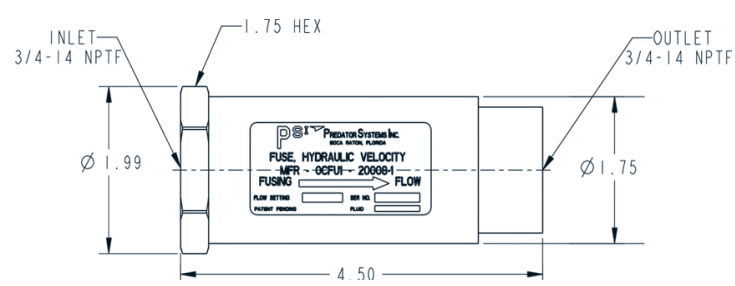
**PERFORMANCE SPECIFICATIONS:**

- RATED FLOW RATE: 1 to 20.0 GPM
- SOFT STOP: YES, 0.3G MAXIMUM
- LEAKAGE (FUSE CLOSED): 1 DROP/MINUTE MAXIMUM
- PRESSURE RATING: 1,000 PSI
- PROOF PRESSURE: 7,500 PSI
- PRESSURE DROP: 30 PSID MAXIMUM @ 6 GPM, 80°F FLUID
- OPERATING FLUID: HYDRAULIC OIL
- OPERATING TEMPERATURE: -45°F to +275°F
- MATERIAL: STEEL, ZINC PLATED
- WEIGHT: APPROXIMATELY 2.1 LBS.
- FITTINGS: 3/4" - 14 NPTF

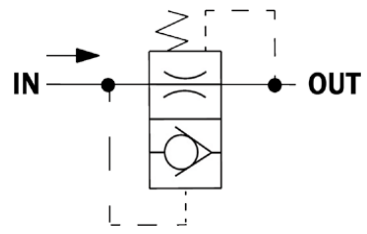


The patented PSI Velocity Fuse is designed to sense the movement of the fluid and react when the velocity increases above a predetermined amount. When the flow direction is reversed (flowing from the outlet to the inlet), the fuse will reset (if it has been tripped). The fuse allows free flow in the reverse direction.

**DIMENSIONS:**



**SCHEMATIC DIAGRAM:**



Model	Rated Flow Rate	Fusing Flow Rate
20008-1	1.0 GPM	1.3 GPM
20008-2	2.0 GPM	2.6 GPM
20008-3	3.0 GPM	3.9 GPM
20008-4	4.0 GPM	5.2 GPM
20008-5	5.0 GPM	6.5 GPM
20008-6	6.0 GPM	7.8 GPM
20008-7	7.0 GPM	9.1 GPM
20008-8	8.0 GPM	10.4 GPM
20008-9	9.0 GPM	11.7 GPM
20008-10	10.0 GPM	13.0 GPM
20008-11	11.0 GPM	14.3 GPM
20008-12	12.0 GPM	15.6 GPM
20008-13	13.0 GPM	16.9 GPM
20008-14	14.0 GPM	18.2 GPM
20008-15	15.0 GPM	19.5 GPM
20008-16	16.0 GPM	20.8 GPM
20008-17	17.0 GPM	22.1 GPM
20008-18	18.0 GPM	23.4 GPM
20008-19	19.0 GPM	24.7 GPM
20008-20	20.0 GPM	26.0 GPM

SPECIFICATIONS ARE SUBJECT TO CHANGE WITHOUT NOTICE