



PRODUCT BULLETIN

HYDRAULIC FUSES MODEL 20008-6 VELOCITY FUSE (SOFT STOP)

PERFORMANCE SPECIFICATIONS:

RATED FLOW RATE: 6.0 GPM
FUSING FLOW RATE: 7.8 GPM (+/- 0.3 GPM)
SOFT STOP: YES, 0.3G MAXIMUM
LEAKAGE (FUSE CLOSED): 1 DROP/MINUTE MAXIMUM
PRESSURE RATING: 1,000 PSI
PROOF PRESSURE: 7,500 PSI
PRESSURE DROP: 30 PSID MAXIMUM @ 6 GPM, 80°F FLUID
OPERATING FLUID: HYDRAULIC OIL
OPERATING TEMPERATURE: -45°F to +275°F
MATERIAL: STEEL, ZINC PLATED
WEIGHT: APPROXIMATELY 2.1 LBS.



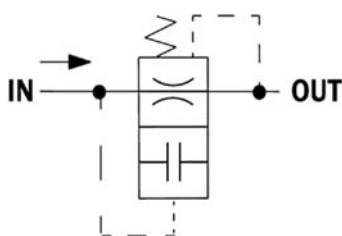
PSI designs and manufactures a wide range of hydraulic fuses and related directional control devices. The Velocity Fuse is designed to sense the movement of the fluid and react when the velocity increases above a predetermined amount. The patented PSI Velocity Fuse works by sensing the flow across a control orifice. When the pressure differential exceeds approximately 50 PSID, a spring biased poppet will close, causing the fuse to shut off the flow to the outlet.

A velocity fuse requires a flow potential large enough to meet the differential pressure setting. To allow for small flow surges just above the fuse rating, the flow required to trip the fuse is 30% above the rated flow. Flow surges can be caused by sudden start/stops, valve actuations, motor reversals, etc. If required, we also offer a slow-blow version of this fuse that incorporates a 200 millisecond time delay to further suppress spurious flow surges.

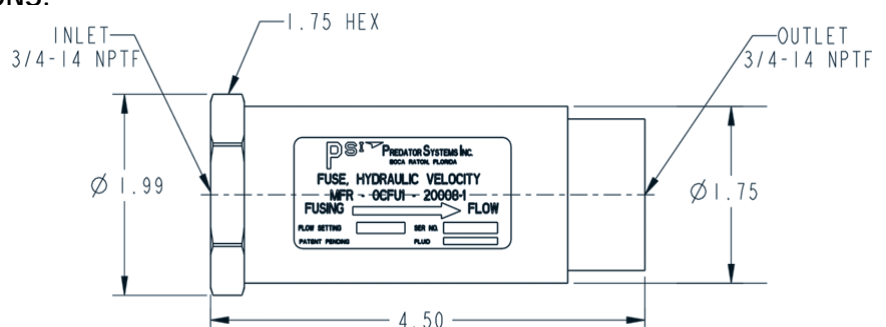
When the flow direction is reversed (flowing from the outlet to the inlet), the fuse will reset (if it has been tripped). The fuse allows free flow in the reverse direction.

Model 20008 is available in twenty (20) different flow ratings from 1 GPM to 20 GPM. The last number in the part number indicates the flow range (i.e., Model 20008-6 is rated for 6 GPM). Model 20007 is an adjustable version of this fuse.

SCHEMATIC DIAGRAM:



DIMENSIONS:



SPECIFICATIONS ARE SUBJECT TO CHANGE WITHOUT NOTICE