



# PRODUCT BULLETIN

## HYDRAULIC FUSES

### MODEL 20010 SERIES

### VELOCITY FUSE

### (SOFT STOP)

**PERFORMANCE SPECIFICATIONS:**

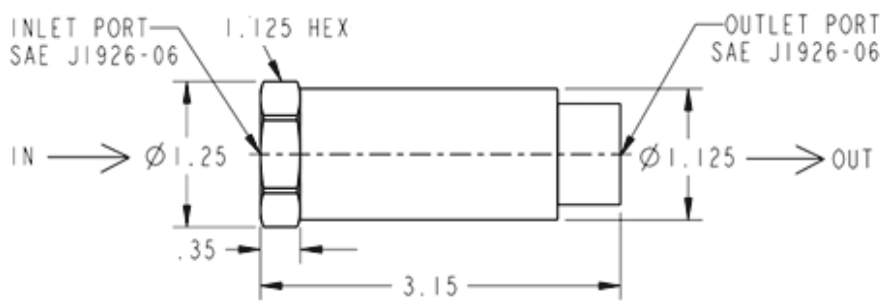
- RATED FLOW RATE: 1 to 6.0 GPM
- SOFT STOP: YES, 0.3G MAXIMUM
- LEAKAGE (FUSE CLOSED): 1 DROP/MINUTE MAXIMUM
- PRESSURE RATING: 1,000 PSI
- PROOF PRESSURE: 7,500 PSI
- PRESSURE DROP: 30 PSID MAXIMUM @ 6 GPM, 80°F FLUID
- OPERATING FLUID: HYDRAULIC OIL
- OPERATING TEMPERATURE: -45°F to +275°F
- MATERIAL: STEEL, ZINC PLATED
- WEIGHT: APPROXIMATELY 0.6 LBS.
- FITTINGS: SAE J1926-06 (straight thread)



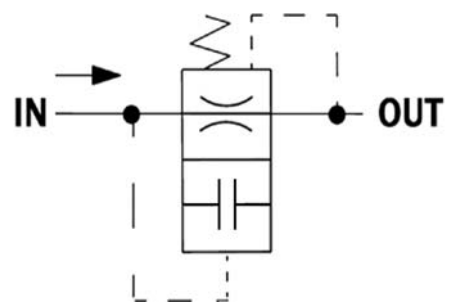
The patented PSI Velocity Fuse is designed to sense the movement of the fluid and react when the velocity increases above a predetermined amount. When the flow direction is reversed (flowing from the outlet to the inlet), the fuse will reset (if it has been tripped). The fuse allows free flow in the reverse direction.

If required, we also offer a slow-blow version of this fuse that incorporates a 200 millisecond time delay to further suppress spurious flow surges.

**DIMENSIONS:**



**SCHEMATIC DIAGRAM:**



Model	Rated Flow Rate	Fusing Flow Rate
20010-1	1.0 GPM	1.3 GPM
20010-2	2.0 GPM	2.6 GPM
20010-3	3.0 GPM	3.9 GPM
20010-4	4.0 GPM	5.2 GPM
20010-5	5.0 GPM	6.5 GPM
20010-6	6.0 GPM	7.8 GPM

SPECIFICATIONS ARE SUBJECT TO CHANGE WITHOUT NOTICE