



PRODUCT BULLETIN

HYDRAULIC FUSES MODEL 20011-1 VELOCITY FUSE (ADJUSTABLE)

PERFORMANCE SPECIFICATIONS:

RATED FLOW RATE: 0.5 to 6.0 GPM
FUSING FLOW RATE: ADJUSTABLE
LEAKAGE (FUSE CLOSED): 1 DROP/MINUTE MAXIMUM
PRESSURE RATING: 3,000 PSI
PROOF PRESSURE: 7,500 PSI
PRESSURE DROP: APPROXIMATELY 30 PSID @ RATED FLOW
OPERATING FLUID: HYDRAULIC OIL
OPERATING TEMPERATURE: -45°F to +275°F
MATERIAL: STEEL, ZINC PLATED
WEIGHT: APPROXIMATELY 1.0 LB.



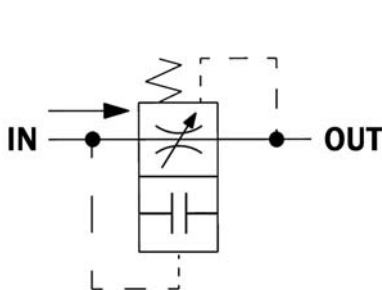
PSI designs and manufactures a wide range of hydraulic fuses and related direction/control devices. The Velocity Fuse is designed to sense the movement of the fluid and react when the velocity increases above a predetermined amount. The patented PSI Velocity Fuse works by sensing the flow across a control orifice. When the pressure differential exceeds approximately 50 PSID, a spring biased poppet will close, causing the fuse to shut off the flow to the outlet.

While installed in a hydraulic line, the patented PSI Adjustable Velocity Fuse can be externally adjusted to allow for a precise flow trip setting without having to disconnect the hydraulic lines. Once the fusing flow setting is optimized, the housing can be locked in place for repetitive operation. When the flow direction is reversed (flowing from the outlet to the inlet), the fuse will reset (if it has been tripped). The fuse allows free flow in the reverse direction.

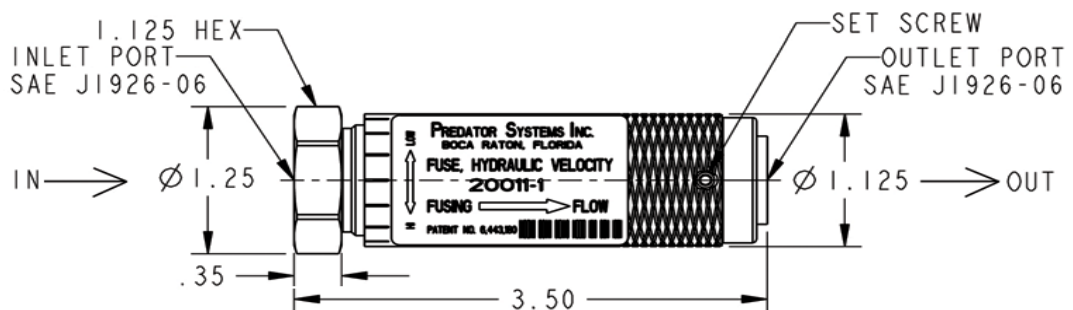
Model 20011 is an adjustable velocity fuse with a rated flow range between 0.5 and 6.0 GPM. Model 20010 fuses are the non-adjustable versions of this fuse, available in six (6) different flow ratings from 1 GPM to 6 GPM. Refer to Product Bulletin 20010-6 for more information.

OPERATION: The fuse trip point is adjusted by rotating the body of the fuse. To adjust, simply loosen the set screw, rotate the body (direction indicated on the body), then lock in place by tightening the set screw.

SCHEMATIC DIAGRAM:



DIMENSIONS:



SPECIFICATIONS ARE SUBJECT TO CHANGE WITHOUT NOTICE