



PRODUCT BULLETIN

HYDRAULIC FUSES MODEL 20014 VELOCITY FUSE

PERFORMANCE SPECIFICATIONS:

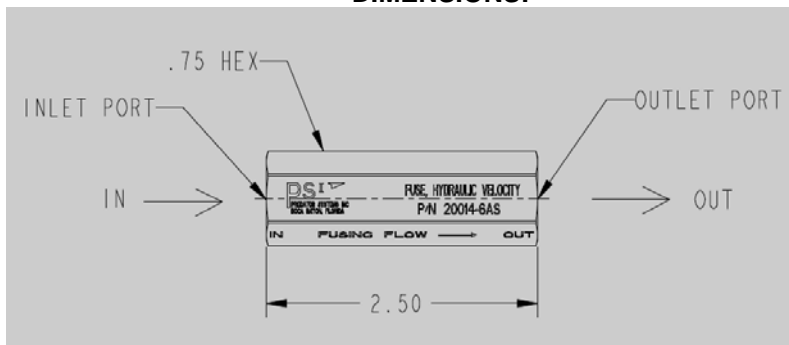
- RATED FLOW RATE:** 0.5 to 6.0 GPM
- FUSING FLOW RATE:** FIXED 30% ABOVE FLOW RATE
- LEAKAGE (FUSE CLOSED):** 1 DROP/MINUTE MAXIMUM
- PRESSURE RATING:** 3,000 PSI
- PROOF PRESSURE:** 7,500 PSI
- PRESSURE DROP:** SEE CHART BELOW
- OPERATING FLUID:** HYDRAULIC OIL
- OPERATING TEMPERATURE:** -45°F to +275°F
- MATERIAL:** STAINLESS STEEL or STEEL, ZINC PLATED
- WEIGHT:** APPROXIMATELY 0.2 LB.
- FITTINGS:** SAE J1926-06 (Straight Thread) or 3/8-18 NPTF



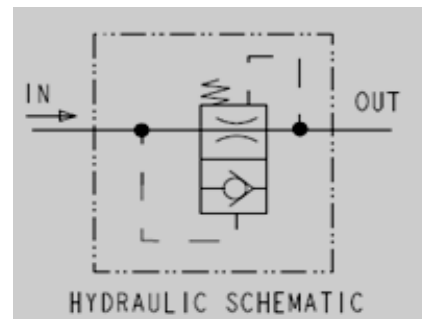
The PSI Model 20014 family of velocity fuses are designed to provide a low cost, reliable solution to a wide range of hydraulic fuse requirements. The fuse senses fluid movement and will close when the velocity increases above the fusing flow rate, the fuse will automatically re-set with reverse flow and allows flow in the reverse direction.

Model 20014 fuses are available in six (6) different flow ratings from 1 GPM to 6 GPM. Refer to the table below for additional product information. See page 2 for part number ordering instructions.

DIMENSIONS:



SCHEMATIC DIAGRAM:



Model	Rated Flow Rate	Fusing Flow Rate	*Pressure Differential
20014-1	1.0 GPM	1.3 GPM	15 PSID
20014-2	2.0 GPM	2.6 GPM	19 PSID
20014-3	3.0 GPM	3.9 GPM	22 PSID
20014-4	4.0 GPM	5.2 GPM	25 PSID
20014-5	5.0 GPM	6.5 GPM	32 PSID
20014-6	6.0 GPM	7.8 GPM	40 PSID

SPECIFICATIONS ARE SUBJECT TO CHANGE WITHOUT NOTICE

(*) *Approximately*



PRODUCT BULLETIN

HYDRAULIC FUSES MODEL 20014 VELOCITY FUSE

FUSE SELECTION GUIDE

PART NUMBER NOMENCLATURE:

20014 - 6 A S

MATERIAL

- S CRES 303
- C STEEL, ZINC PLATED

PORT STYLE AND SIZE

- A SAE J1926 - 06
- B 3/8 - 18 NPTF

RATED FLOW

- 1 1 GPM
- 2 2 GPM
- 3 3 GPM
- 4 4 GPM
- 5 5 GPM
- 6 6 GPM

BASIC PART NUMBER